

Pro/ENGINEER® Wildfire®

Fluent's Pro/ENGINEER Wildfire Connection provides tools within PTC's Pro/ENGINEER environment that enable you to prepare and verify that your model is CFD-ready. If there are problems with the geometry model, they can be identified early and resolved. With the new Pro/ENGINEER Wildfire connection tools, you do not have to wait until you are ready to mesh or solve to determine that geometry repairs are needed. For example, the following checks can be done before you complete your Pro/ENGINEER session:

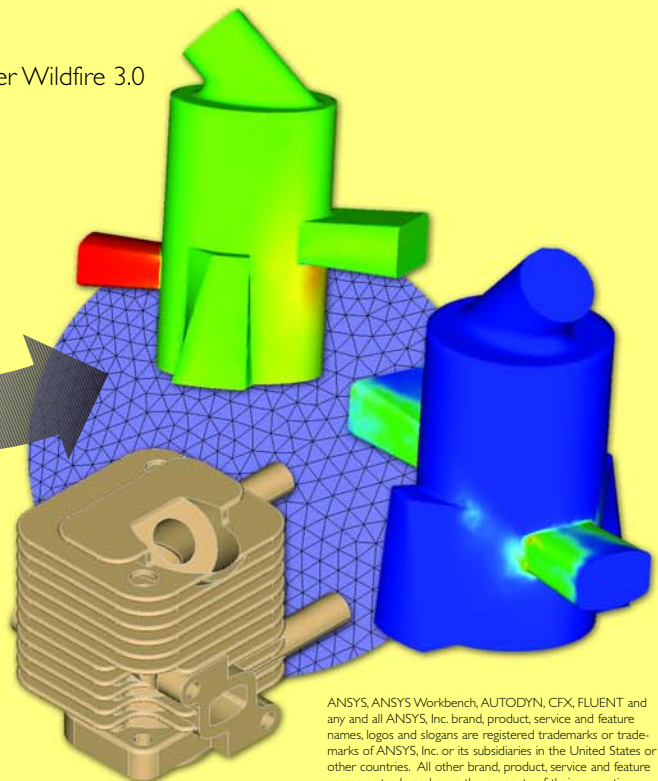
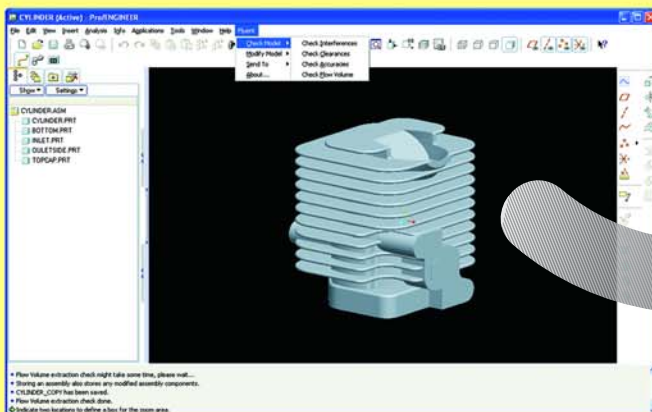
- ◆ The Check Interferences tool allows you to verify that no parts interfere with each other within an assembly
- ◆ The Clearance Check tool allows you to perform clearance checks between adjacent parts
- ◆ If your model contains various openings or holes, you can use the Pro/ENGINEER Connection to close them by adding capping faces, forming a "water-tight" flow volume
- ◆ The Check Flow Volume tool will verify if a flow volume can be extracted from the geometry model

The concept of the Pro/ENGINEER Connection is to identify and resolve technical nuances as the geometry model is being created, eliminating iterative hand-offs between staff or groups within an organization. This enhances productivity. Once ready, with one click you can load the model directly into FloWizard or GAMBIT to set up your CFD analysis and solve for the flow in or around the geometry.

Because the Pro/ENGINEER Connection is associative with FloWizard, you can automatically update your CFD analysis with changes made to the Pro/ENGINEER model without the need to redefine all of the problem setup.

Supported Operating System: 32-bit and 64-bit Windows XP

Supported Platforms: Pro/Engineer Wildfire 2.0 and Pro/Engineer Wildfire 3.0



Contact your local ANSYS/Fluent office to find out more

www.fluent.com • info@fluent.com

Fluent is a wholly owned subsidiary of ANSYS, Inc.



ANSYS, ANSYS Workbench, AUTODYN, CFX, FLUENT and any and all ANSYS, Inc. brand, product, service and feature names, logos and slogans are registered trademarks or trademarks of ANSYS, Inc. or its subsidiaries in the United States or other countries. All other brand, product, service and feature names or trademarks are the property of their respective owners. © 2007 ANSYS, Inc. All rights reserved.