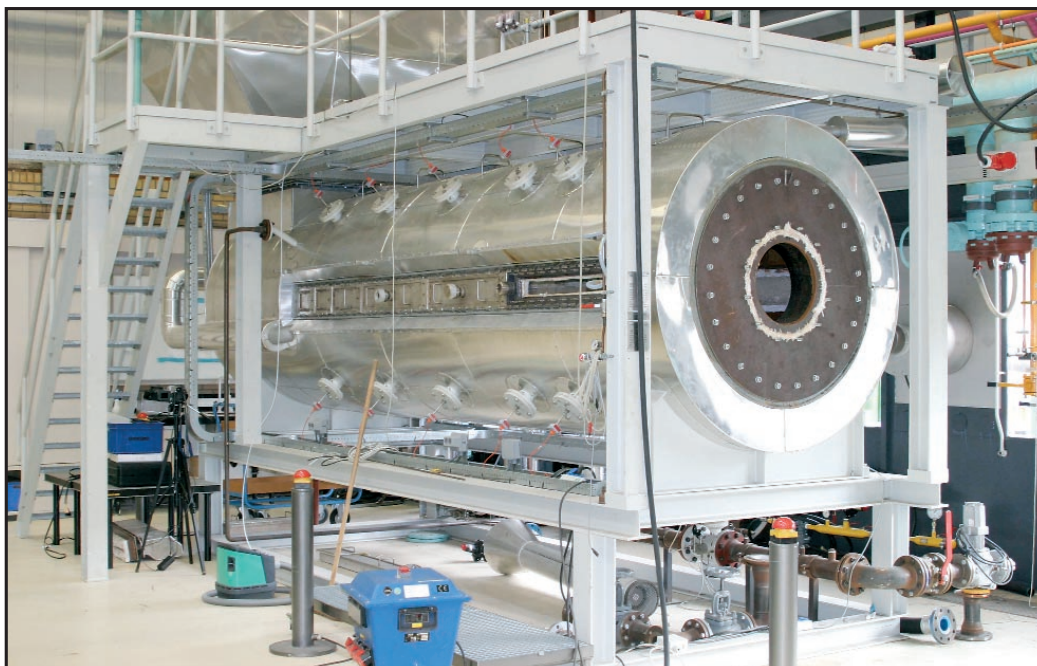


Gasunie Research and Fluent Europe Ltd. Form New Engineering Consultancy Partnership



A 4MW test-furnace with optical access Courtesy of Gasunie Research

Gasunie Research of The Netherlands and Fluent Europe Limited have formed a new partnership aimed at providing clients with a total consultancy service based on the combination of experimental work and simulation. Operating primarily in the utilization, conversion, and transport of energy, the partnership will pool the expertise of both companies to provide leading-edge solutions for industry, OEMs, engineering consultants, and transmission and distribution companies.

Gasunie Research has developed wide-ranging expertise in research and physical experimentation through forty years of work on energy-related problems, and has made an essential contribution to the development of the gas market in the Netherlands. The company offers their clients innovative, integrated solutions to complex problems related to energy

processes, gas quality and diversity, combustion, and flow phenomena.

Explaining the reasoning behind the new partnership, Rob Burghard, Manager of Energy Innovation and Consultancy at Gasunie Research, says: "FLUENT CFD is an excellent tool, well established in the field of energy process. It allows us to identify and focus only on those experiments that are essential, helping to reduce the duration and costs of development and trouble-shooting projects. This makes it an important element of our consultancy service."

Adrian Booth, Business Development Manager at Fluent Europe, says: "As with all CFD software, the accuracy of the final results depends on the quality of the initial data and measurements input for analysis. Gasunie Research has the ability to ensure that the very best experimental data is provided, so that the final CFD analysis will yield the

most accurate results possible. This capability, in tandem with the additional consultancy services Gasunie Research offers, means this new partnership will provide clients with the most comprehensive and reliable consultancy service available, producing results we are confident will meet all our clients' needs." ■

more.info@
www.gasunieresearch.nl
g.c.tiekstra@gasunie.nl

CFD image showing burner geometry and velocity magnitude contours
Courtesy of Gasunie Research

